

Liskeard Yesterday, Today, Tomorrow?

Liskeard is over **1000** years old, having been recorded in the **Domesday Book**, and granted a charter in **1240**. It flourished in the middle ages, thanks to its markets, status as a **stannery town**, and tanning and paper-making industries.

It's **wealth** really grew in the 19th century, when a boom in **mining** to the North, led to its establishment as the administrative and commercial centre for South East Cornwall. Much of the **fine architecture** in the town was financed by the income from Copper, Tin, Silver and Lead mines.

Today, with a population of nearly **9500**, Liskeard has good **road and rail links** to other areas of Cornwall, as well as to the rest of the country. The town sits between the Seaton and Looe rivers, with productive farmland and Areas of Great Landscape Value on its outskirts, and the World Heritage Mining Site close by at Caradon and Minions on the southern edge of Bodmin Moor. The town has a **wide range of independent shops** and cafes, banks, a post office, library, museum, and arts centres, a leisure centre, as well as a hospital. There is both primary and secondary school provision, and Cornwall Council has several centrally located offices.

**LOCAL
PEOPLE
PLAY A
MAJOR
ROLE IN
MAKING
THE PLAN**

How will our characterful market town develop and flourish in the future???

(Taken from 'Liskeard community strategic plan' and 'Liskeard draft conservation area appraisal and management plan'.)





Get on board & help plan for the future of Liskeard

What is a Neighbourhood Plan?

It gives people like ourselves a real say in how our community develops – the way that land is used for housing, business, shops and leisure. It can also protect green spaces and influence design

Local people play a major role in making the plan. It's part of their democratic right granted by the Localism Act.

The plan has to be agreed through a local referendum. It may take up to 2 years to complete. It will have legal force for the next 20 years, and must be followed by Cornwall Council when making planning decisions.

Why should we Care?

Are we up for taking part in some tough decisions about the future of the town? Things like where housing should go, jobs created, shopping developed and play spaces increased. Or do we let those decisions be made elsewhere? **The Liskeard Neighbourhood Plan is this community's chance to make these important decisions locally, and to strongly influence how future planning applications are decided. The more people involved, the better chance there is of making this a brilliant plan for Liskeard!**

BUT there is some 'small print': it's got to be realistic. A Neighbourhood Plan is **not about stopping development**. It's really **about making local land-use choices**, which the whole community will have to support through the referendum. It must fit within the National Planning Policy Framework, Cornwall's Local Plan, and be in accord with European legislation

Localism

Historically neighbourhood plans have come out of the Localism Act of 2011/12

“Instead of local people being told what to do, the Government thinks that local communities should have genuine opportunities to influence the future of the places where they live”

Since then communities throughout the country have been drawing up plans – a few have reached completion, some have just started and others are on-going



What's in it for our community?

- Achieving consensus over the future of our town through working together
- Awareness and influence in dealing with the planning process and decisions
- Closer working between Cornwall Council and the Town – less them and us
- Community pride in achieving a plan that increases sense of ownership, and respect for the local area
- Contribution from Community Infrastructure Levy (CIL) to benefit community projects

**LOCAL
PEOPLE
PLAY A
MAJOR
ROLE IN
MAKING
THE PLAN**



How you can get involved

- Help decide what should be in the plan by taking part in workshops, drop-in sessions, exhibitions and surveys.
- Keep up-to-date via the dedicated web-site, posters, the press and radio, and the Town Crier.
- Talk about the Plan with friends and neighbours – spread the word!
- Contribute your ideas and suggestions.
- Comment on the draft plan before it goes off for inspection and we all vote on it.
- Join a working party that focuses on a particular topic.
- Volunteer practical help to create the Plan, from note-taking to photocopying, from delivering leaflets to support with exhibitions.
- And if you have plenty of time to spare...volunteer to serve on the Neighbourhood Plan Team to help organise the creation of the Plan.

To find out more see:

- the Town Council's Neighbourhood Plan website:www.planlisheard.co.uk
- the Neighbourhood Plan Facebook page
- Tweet @planlisheard
- or contact the Town Council on **01579 345407**



The small print

There are many documents that have fed into the planning process to date. These include:

- The Caradon plan
- Liskeard community strategic plan
- Cornwall local development framework
- Liskeard Town Framework
- The Localism Act 2012
- National Planning Policy Framework
- Emerging Cornwall Local Plan

The last two are the most up-to-date and will have to be complied with by the Neighbourhood Plan

National Planning Policy Framework (Mar 2012)

This is the governments planning strategy document, which all local planning authorities must follow.

Its over-arching aim is to allow **‘sustainable development’** – which must perform three roles:

Economic role – providing land and infrastructure to create jobs and a vibrant economy

Social role – ensuring houses, services and facilities are in place to meet the community’s needs

Environmental role – protecting and enhancing the natural, built and historic environments, for present and future generations, and building resilience to climate change by moving towards a low-carbon economy

<https://www.gov.uk/government/publications/national-planning-policy-framework--2>

The NPPF covers many issues ranging from design standards for new dwellings, promoting sustainable transport systems, re-using land and empty buildings, to regeneration of town centres.

**LOCAL
PEOPLE
PLAY A
MAJOR
ROLE IN
MAKING
THE PLAN**



The small print.2

Cornwall Local Plan in final stage of consultation has specific objectives for Liskeard and CNA

<http://www.cornwall.gov.uk/media/6532228/Local-Plan-Proposed-Submission.pdf>

PP15 Liskeard and Looe Community Network Area

Objective 1 – Economy and Jobs

Deliver economic growth/employment, providing much needed jobs to counterbalance current and future housing development in and on the edge of Liskeard.

Objective 2 – Sustainable Development

Improve connectivity within and on the edge of Liskeard to ensure the town functions effectively as a major hub and service centre for the network area; including enhanced public transport provision.

Objective 3 – Liskeard as a Service Centre

Strengthen Liskeard's role as a service centre and improve town centre viability through regeneration schemes including the redevelopment of the cattle market and relocation of the post sorting office to provide a pannier market and improved traffic flow in the town and access from the A38 Moorswater junction.

Objective 4 – Housing

Balance the housing stock to provide a range of accommodation, particularly open market family homes and intermediate affordable housing in Liskeard.

Objective 5 – Leisure Facilities

Improve and maintain the provision of recreational, cultural and leisure services and facilities in Liskeard with particular focus on delivering sports pitches.

Liskeard and Looe Community Network Area

Development will be permitted where it can be demonstrated that the following priorities for Liskeard can be satisfied:

a) The protection of the vitality and viability of Liskeard town centre through the promotion of retail, office and leisure uses. Proposals for change of use or redevelopment will only be permitted within the Primary Shopping Area if the proposal adds to the attractiveness of the centre and does not reduce the predominance of A1 retail use

b) The provision of around 12,400 sqm of B1a office accommodation and 14,200 sqm of Industrial space has been identified. This has the potential of accommodating 1,000 jobs in the CNA over the plan period

c) The provision of around 1,250 dwellings in the period up to 2030;

d) The retention and enhancement of Heritage assets with physical linkages between Liskeard and the Cornwall and Devon Mining Landscape World Heritage Site

**LOCAL
PEOPLE
PLAY A
MAJOR
ROLE IN
MAKING
THE PLAN**



A place to live

Under Cornwall's draft local plan **1250 new houses** need to be built in and around **Liskeard** by **2030**. Some of these have already been allocated but we need to plan for around 600 more.

Where should they be built?

How big should developments be?

What sort of houses do we need?



1 Is housing an area you'd like to see in the Neighbourhood Plan?

2 Do you have any comments about key housing issues for Liskeard?



A place to meet, shop & do business

How can we make the town centre more attractive for shoppers and encourage businesses to invest?
Are there town centre sites which should be redeveloped?
How could we improve community facilities in the town?



7 Is the regeneration of the town centre an area you'd like to see in the Neighbourhood Plan?

8 Do you have any comments about key town centre issues for Liskeard?



A place to relax & enjoy

How can we best maintain and improve access to green spaces in and around Liskeard?
Could cultural and leisure services and facilities be better?



5 Is leisure and green spaces an area you'd like to see in the Neighbourhood Plan?

6 Do you have any comments about key leisure and green spaces issues for Liskeard?



A place to work & learn

There are **not many jobs locally**, especially for young people.

More housing will mean a greater demand for jobs.

How can our plan help to deliver economic growth?

What sort of employment should we try to attract?

How can we use land to create opportunities for employment and training?



3 Is employment and training an area you'd like to see in the Neighbourhood Plan?

4 Do you have any comments about key employment and training issues for Liskeard?



Design & Heritage

**Can we do more to preserve and make use of Liskeard's historic buildings?
What do we want new houses and other buildings to be made of?
What do we want buildings to look like?**



13 Is design and heritage an area you'd like to see in the Neighbourhood Plan?

14 Do you have any comments about key design and heritage issues for Liskeard?



Energy & environment

How can we protect our local environment?

What role should renewable energy play?



11 Is energy and environment an area you'd like to see in the Neighbourhood Plan?

12 Do you have any comments about key environmental issues for Liskeard?

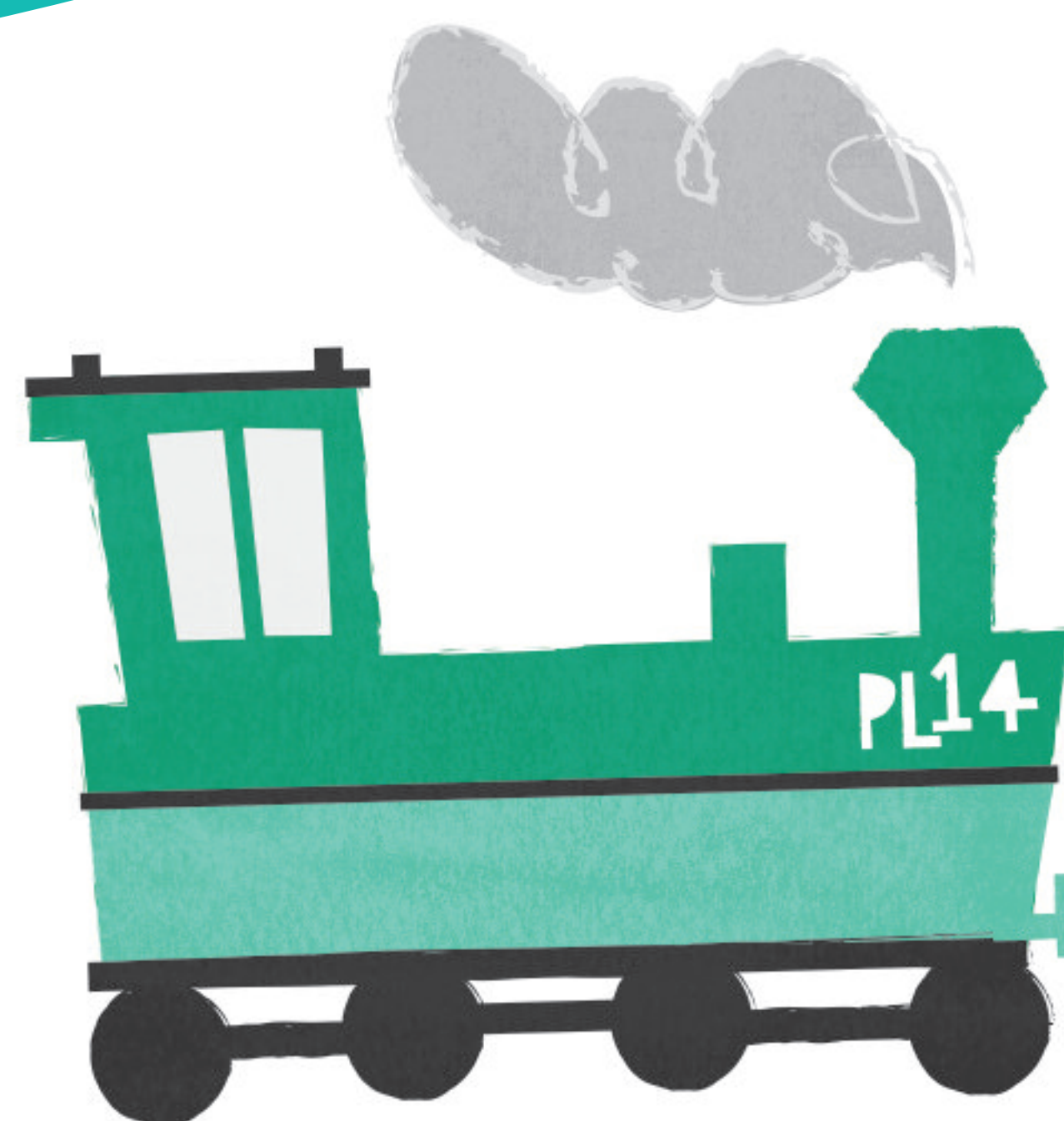


Getting around

How can we use our road network more effectively?

How can we make it easier and safer to walk and cycle?

How can public transport be better?



9 Is transport an area you'd like to see in the Neighbourhood Plan?

10 Do you have any comments about key transport issues for Liskeard?



Comments from the local community

...likes, dislikes, future ideas

“excellent road and rail links”

“small developments, not huge ones”

“friendly market town”

“no cinema”

“community orchard”

“too many houses, not enough jobs”

“community spirit and nice atmosphere”

“lack of short-term parking”

“more leisure facilities for young people”

“need to smarten up appearance of town”

“great architectural heritage”

“like the size and how it is”

“need family entertainment/restaurant”

“Open up bottom end of town around Sungirt”

“lovely library”

LOCAL PEOPLE PLAY A MAJOR ROLE IN MAKING THE PLAN

“lots going on”

“Use brownfield sites before farmland”

