

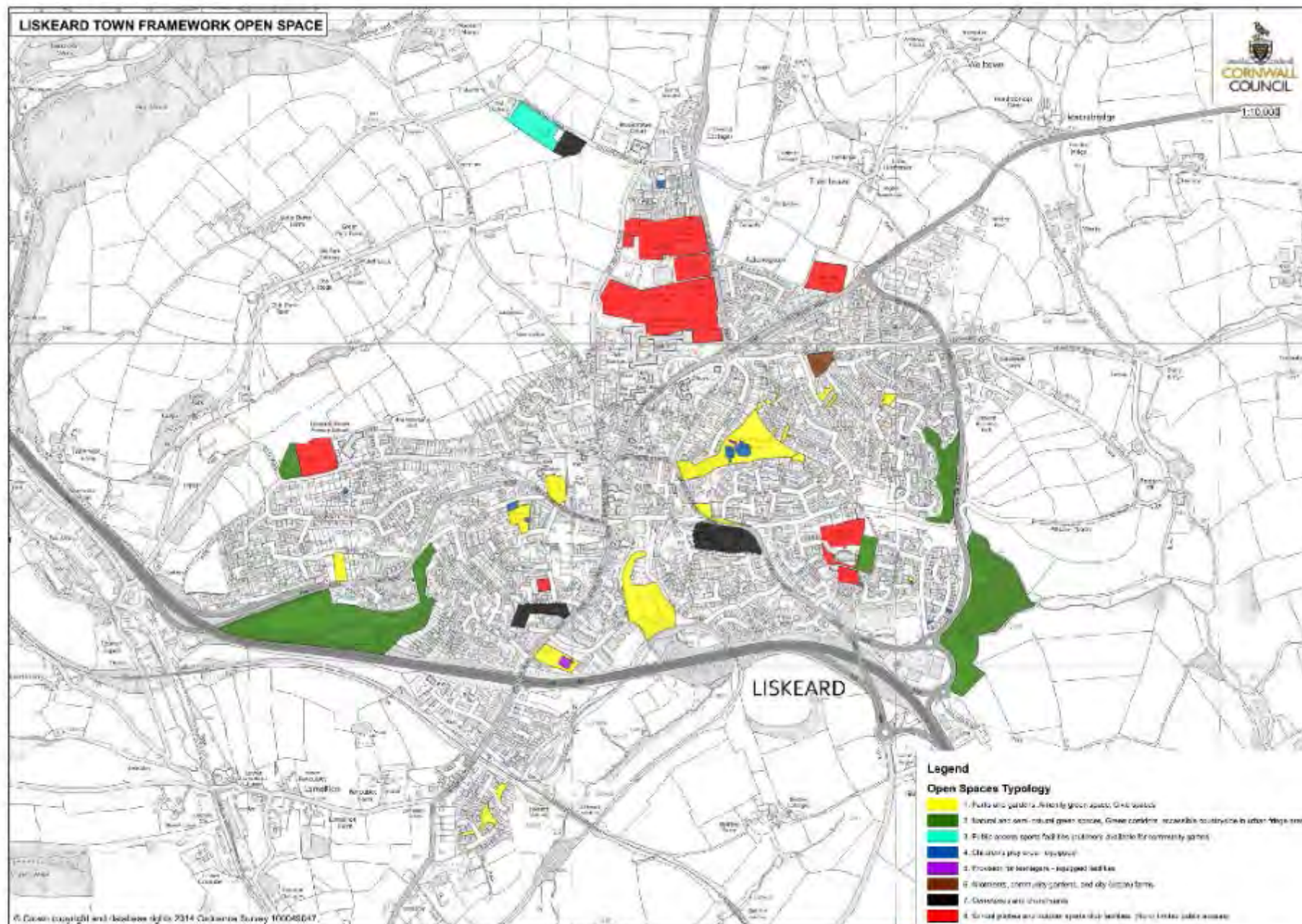
# Liskeard formal green space audit RESULTS

February 2014





# Council assessment incomplete



## Open Space Strategy for Larger Towns in Cornwall

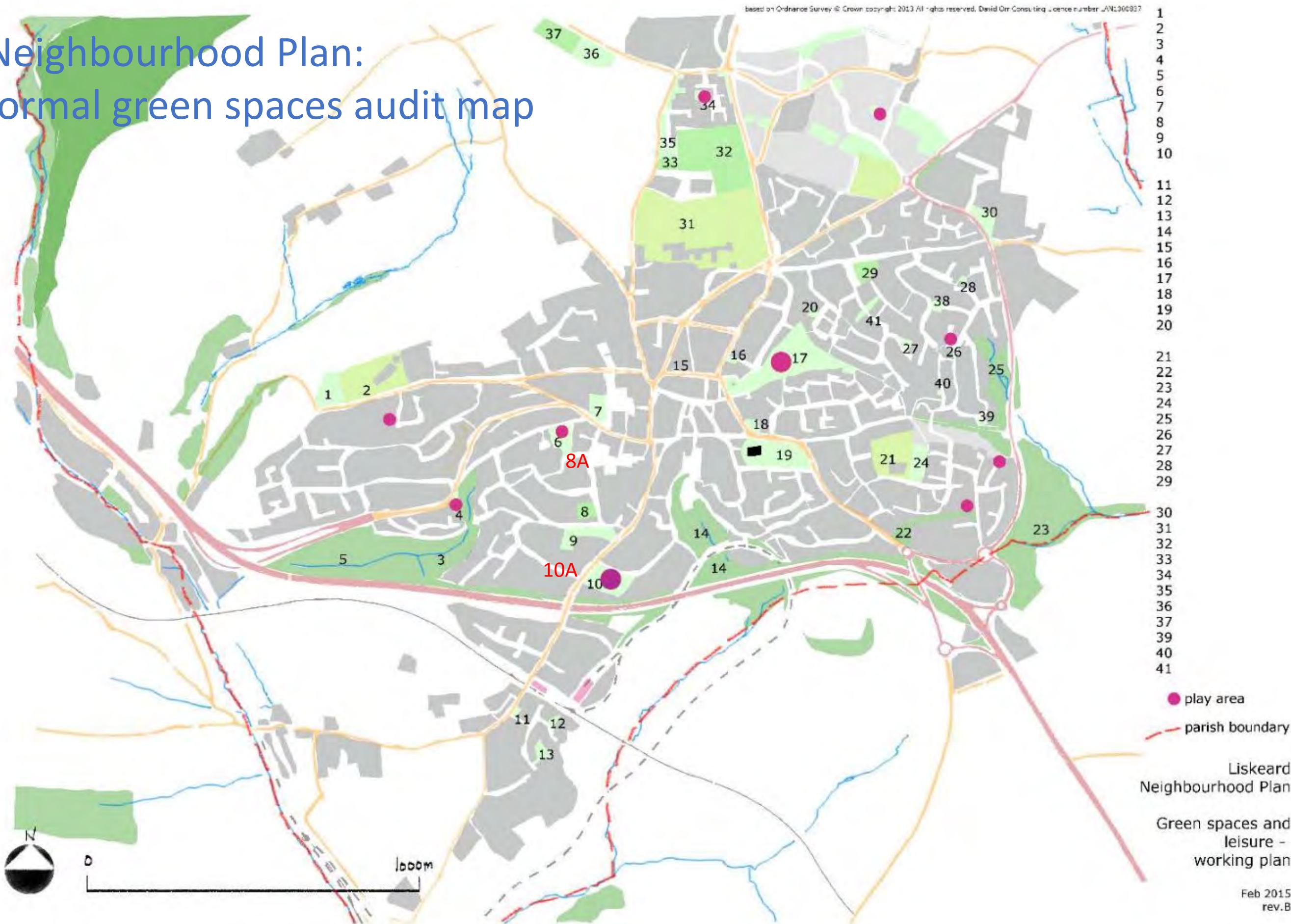
Recommendations for future  
provision standards

July 2014

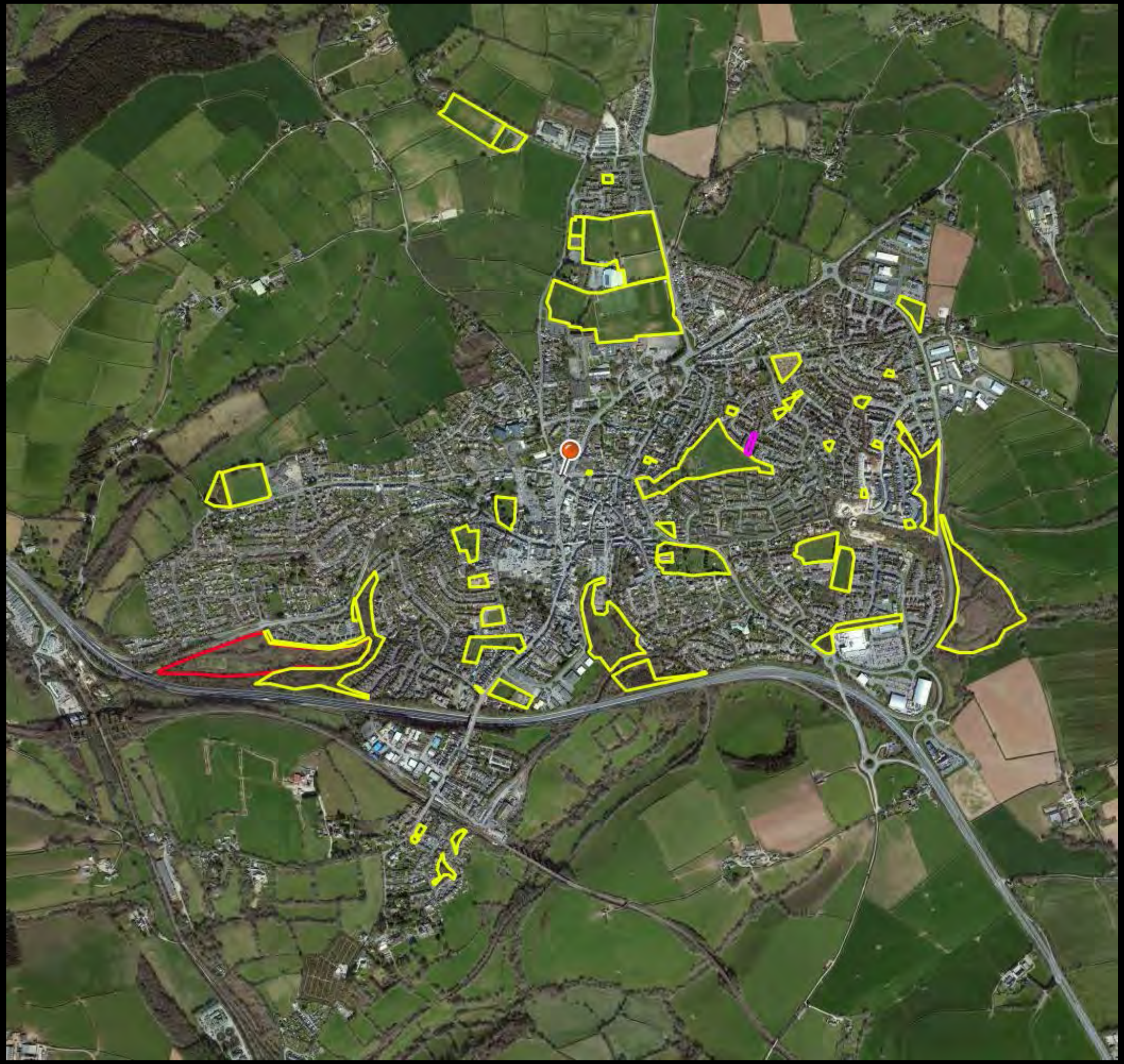
Economy, Enterprise & Environment  
Directorate



# Neighbourhood Plan: formal green spaces audit map









# Audit questions

1. Access
2. Landscape quality
3. Facilities
4. Maintenance
5. Management
6. Security and safety
7. Natural heritage
8. Cultural heritage
9. Education & Health
10. Responses to people



# Results



# How much open space?

## Existing

Current Population	Quantity provision within town for each type (M <sup>2</sup> per person)									
	1	2	3	4	5	6		7	8	
	Parks, amenity	Natural Space	Public outdoor sports	Children's Play	Youth provision	Allotments	Total normal OS (1-6)	Cemeteries churchyard	School pitches & sport clubs	Total all types
10,168	7.31	15.79	1.16	0.51	0.13	0.42	25.32	2.68	11.98	39.99

- 16% lower than average level of useable general parks and amenity space (typ1)
- Level of natural space (2) is low

Lower than average level of both forms of outdoor sports (3 & 8)

- Very low level of allotment space (6)



# Standard requirement for new development

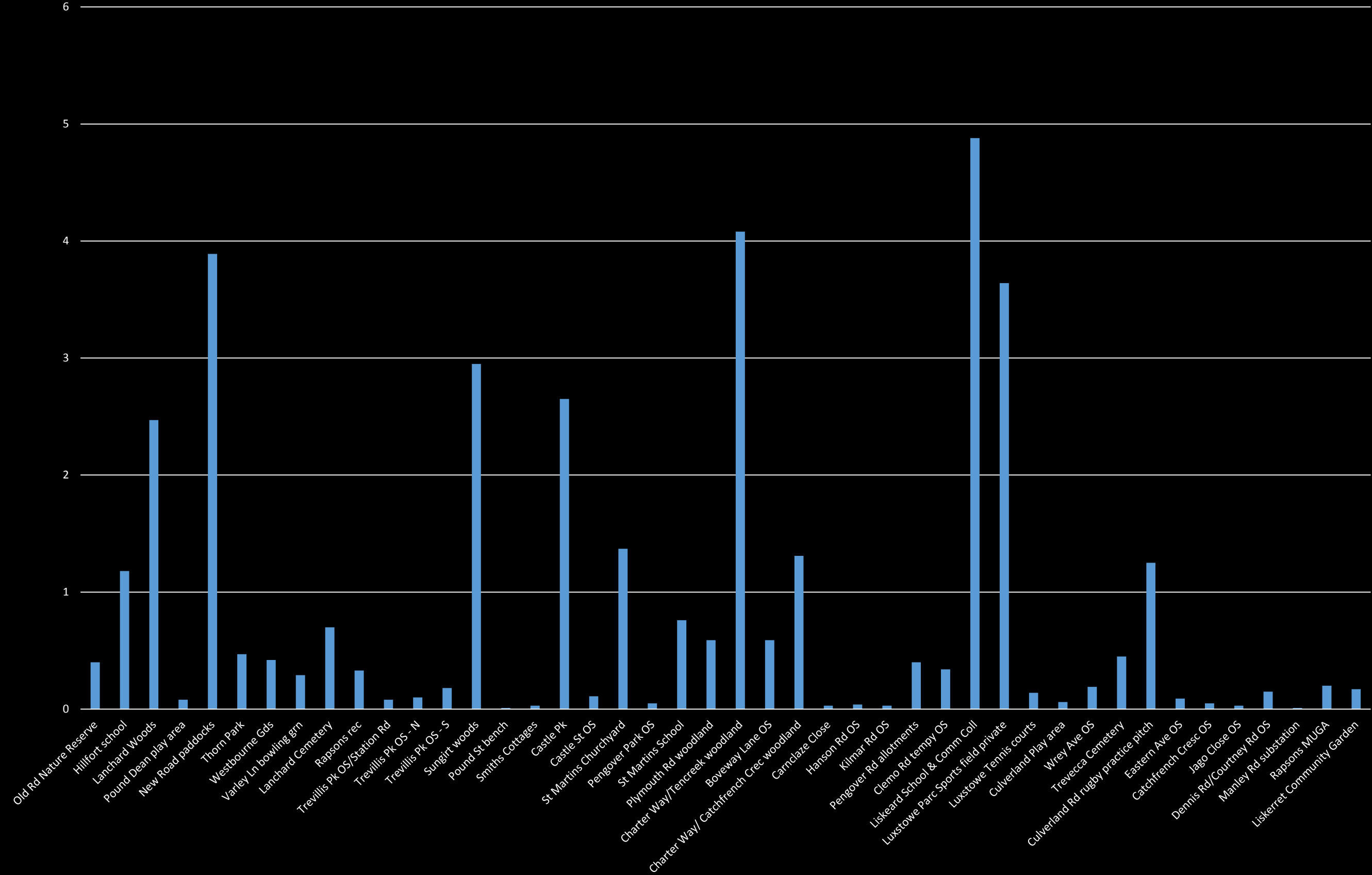
Table 11. Proposed quantity provision standards for strategic open space in Liskeard				
Increased population estimate of: 13,043 (1250 new dwellings)				
Type	Existing requirements based upon assessment of distribution	Recommend.s on future provision	Future quantity provision standard town wide (m <sup>2</sup> /person)	Minimum quantity needed for new housing (m <sup>2</sup> /dwell)
1. Parks, amenity	Addington area (north).	Increase useable space	8.75	20.11
2. Natural space	New provision as part of GI routes	In line with new growth	15.17	29.80
3. Public sport	Additional rugby pitches needed. Strategic hub site only	Increase needed to meet Playing Pitch Standard	16.3 - typ8	36.16
4. Children's Equipped Play	South (Turnpike Place) area and north-east (Pengover Rd) area	New strategic sites with some consolidation to ensure maintainable.	0.70	1.61
5. Teen provision	North-east & north-west	Increase significantly	0.25	0.58
6. Allotments	South-west. 1 nr Hillfort School would be ideal.	Increase	0.75	1.73
7. Cemeteries	Assumes no increase within town study boundary		2.09	-
8. School pitches & clubs	Requires increased availability to community.	See typ.3	16.3 - typ3	-
<b>Total</b>			<b>43.99</b>	<b>-</b>
<b>Total for 1 – 6 (standards apply)</b>			<b>32.56</b>	<b>89.98</b>



## Our findings

- 37.2 ha. total green space
- Of which
  - 6.82 ha are schools
  - 5.2 ha. are private paddocks and closed access woods
  - 4.2 ha limited access sports grounds

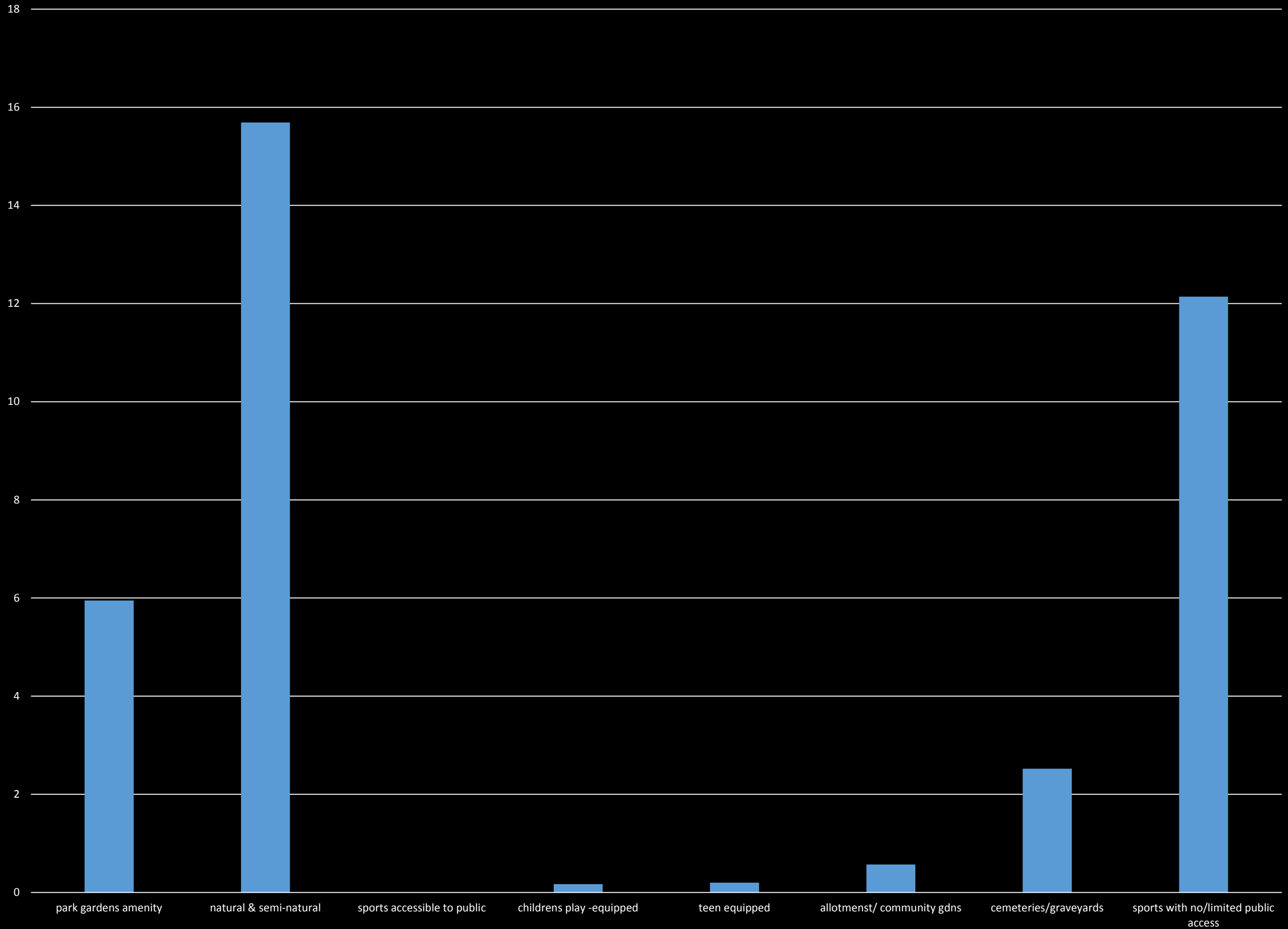
Area ha.





What type of open space?

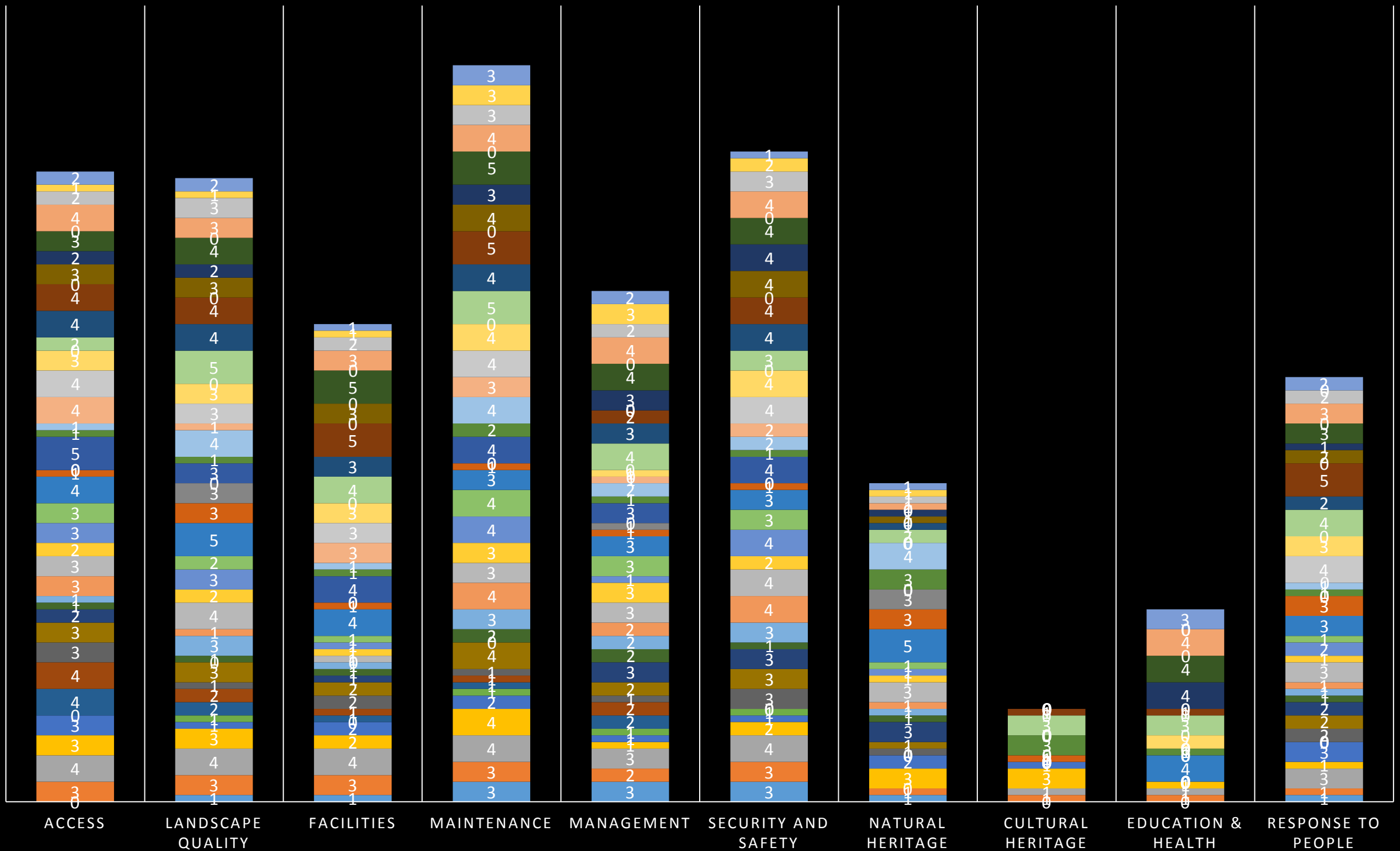
area of green space by type





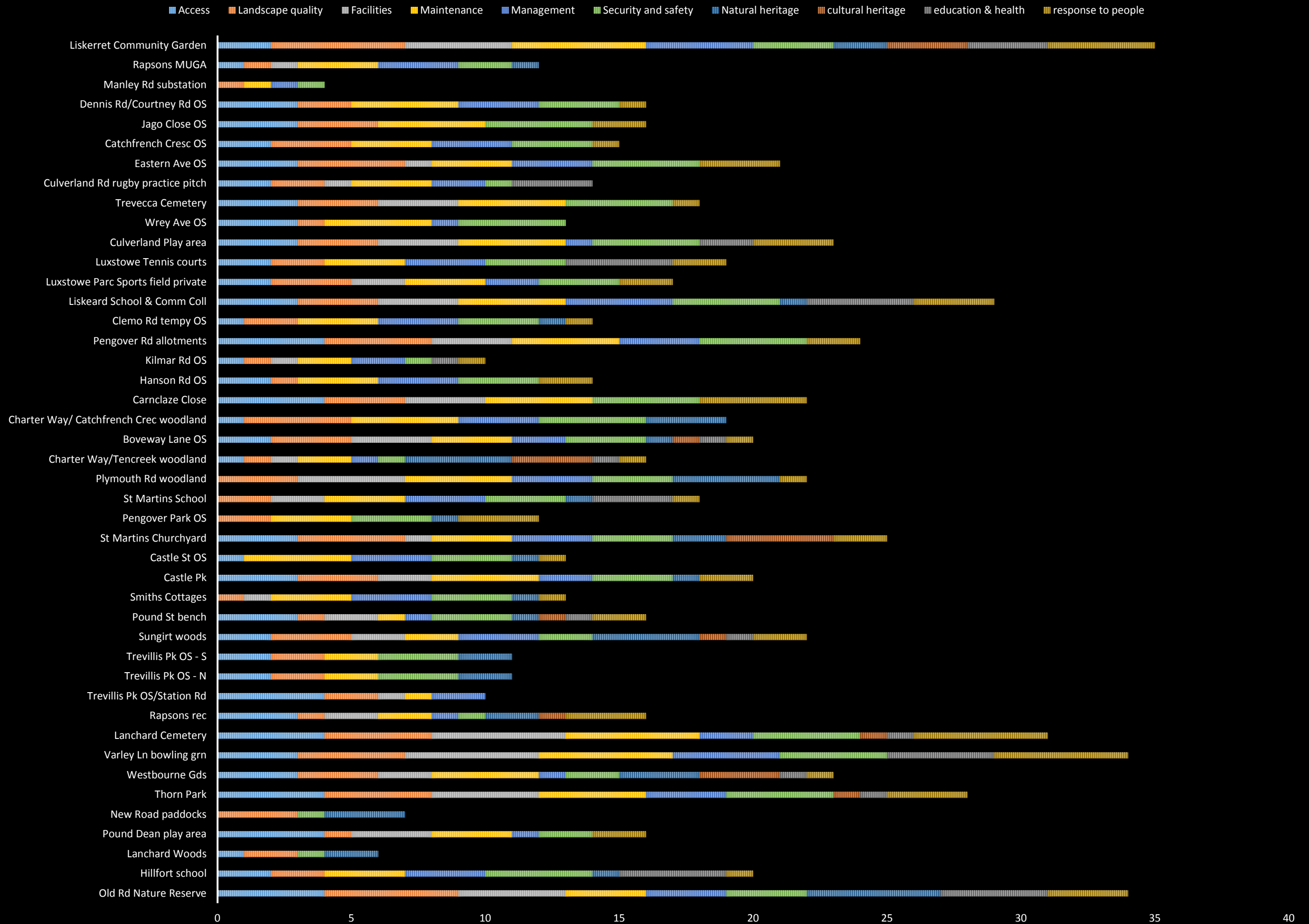
Quality of open spaces?

## OVERALL SCORES BY ASSESSMENT TOPIC

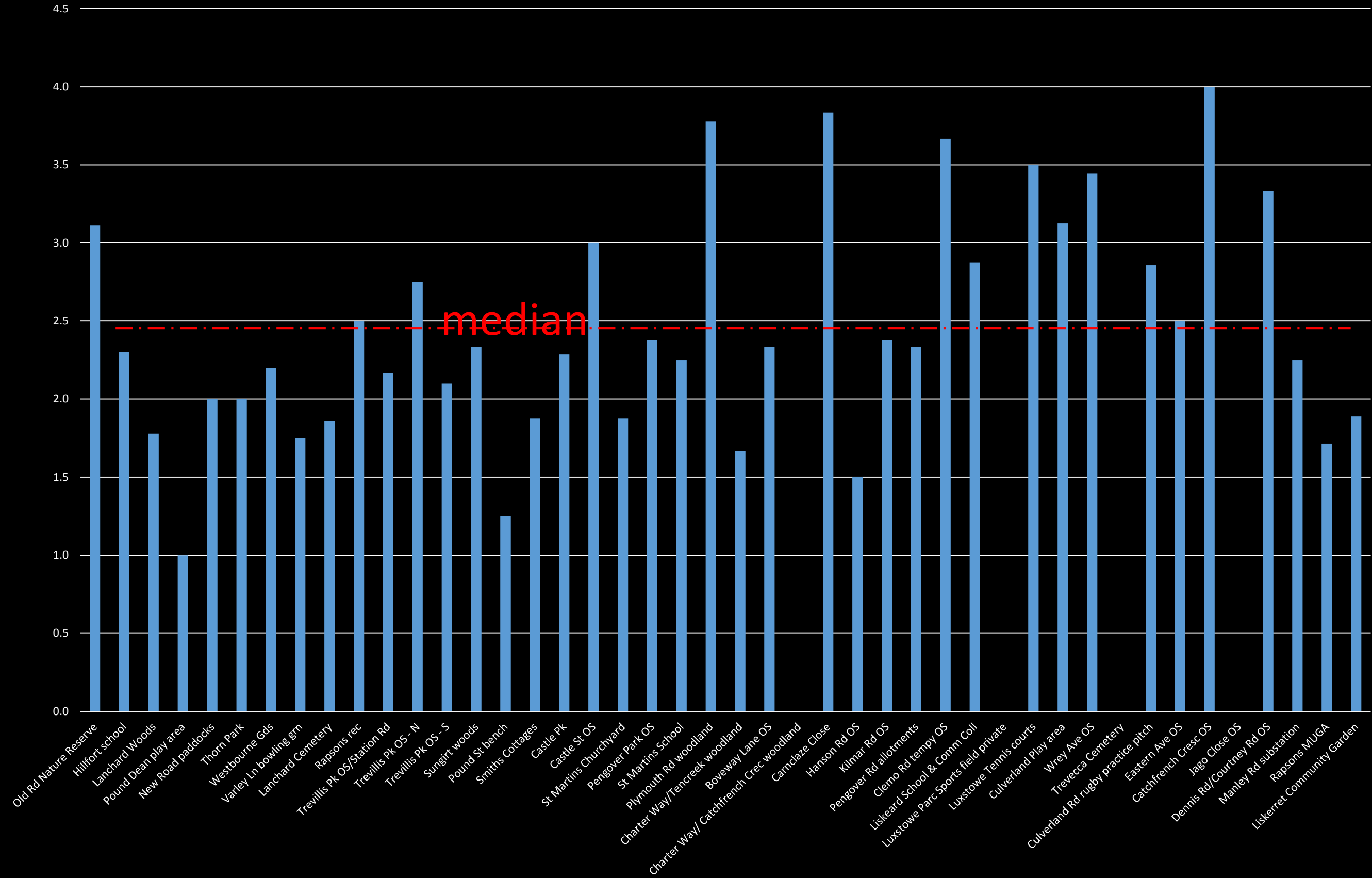




# LISKEARD GREEN SPACE EVALUATION

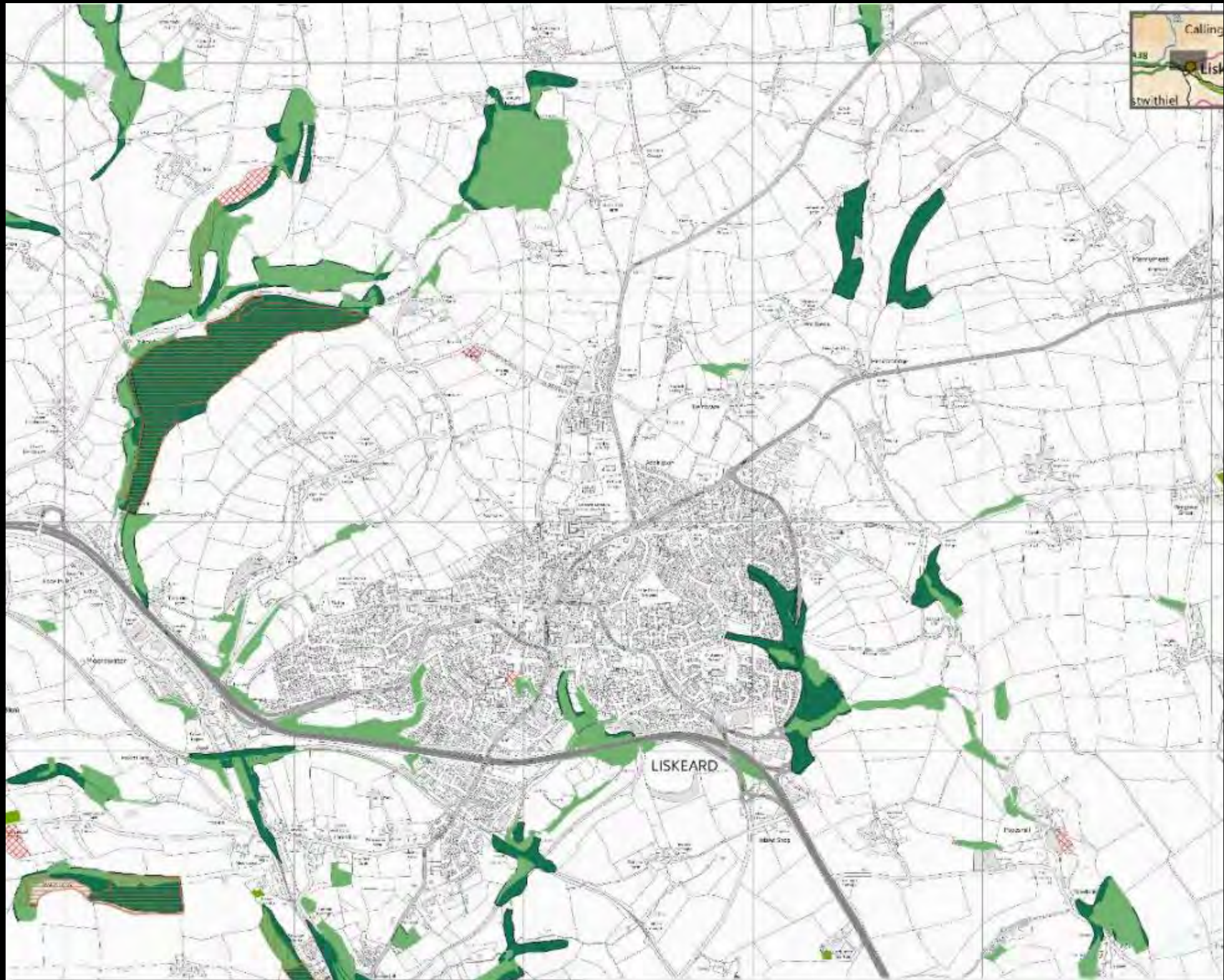


Quality score





# Biodiversity?







Jack Bice Close



Rapson Rd



Henfordh Grange



St Martins Ct



# Civic spaces





# links







heritage





# Neighbourhood Plan: informal green spaces

