

Neighbourhood Plan notes

Date January 2014

Green space/ Green infrastructure

Green space is for

- *Health (walking/cycling etc, food growing, recreation...)*
- *Biodiversity*
- *Connections*
- *Flood and water management*

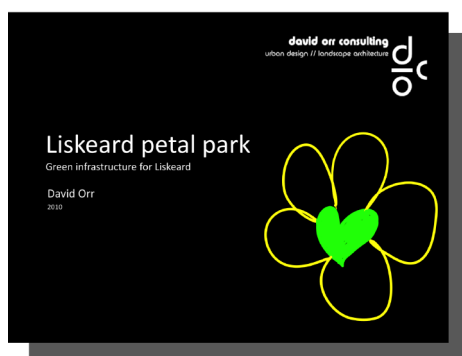
"everyone in Cornwall should have local access to good quality natural green spaces close to where they live"

Green Space Strategies

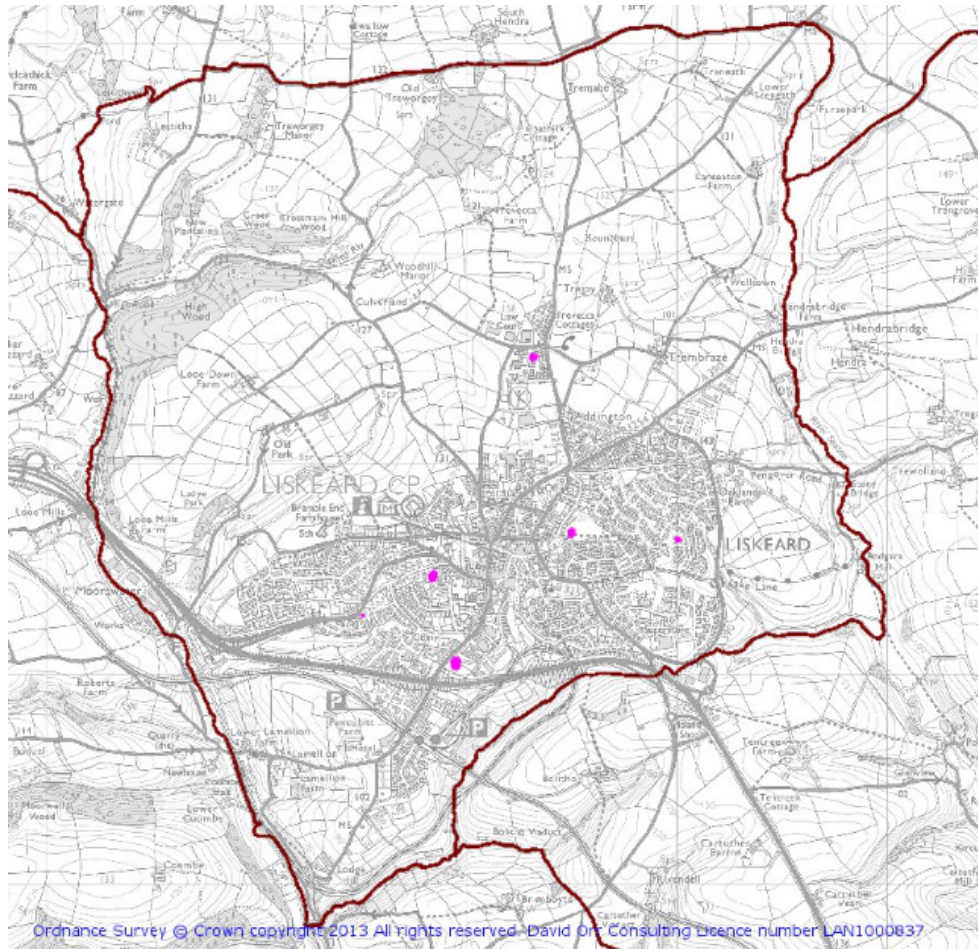
- CABE Space Good Practice Guide 2004 (last national guidance available)
Supporting documents
 - GSS: Assessing Demand Caba Space 2005
 - GSS: Assessing Supply 2005
 - GSS Setting Local standards 2005
 - CABE Space briefing papers on Burial Grounds and allotments, 2005
- English Nature, Accessible Natural Green Space 2003

Liskeard Petal Park, David Orr Consulting study, 2010

<http://bit.ly/1BdQoVf>



Play spaces



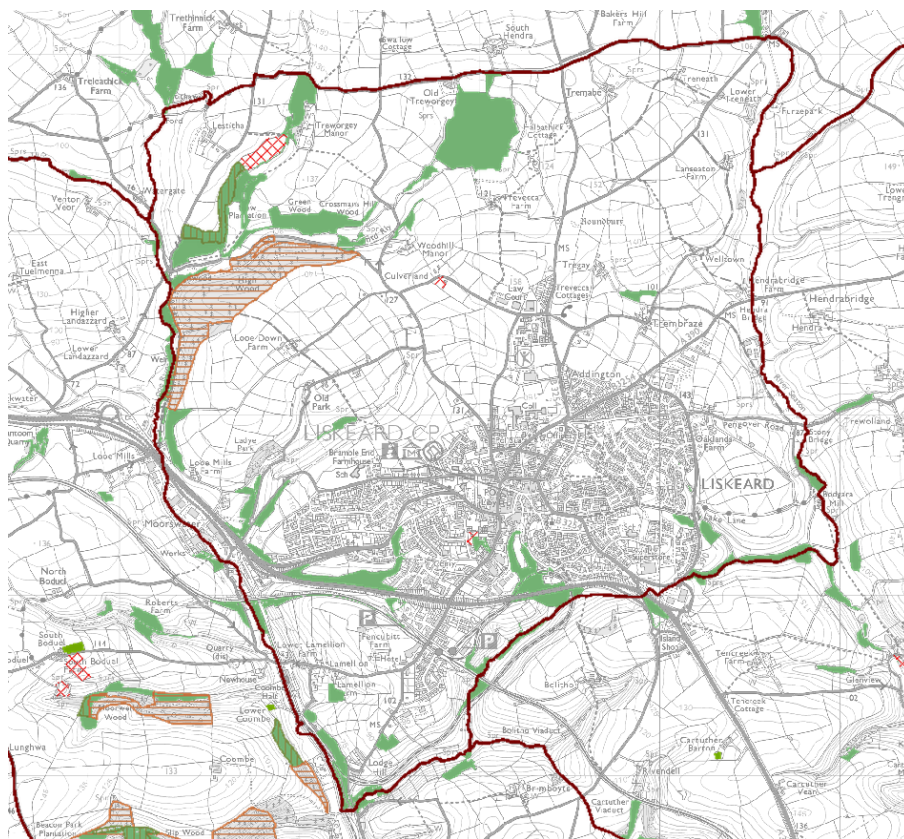
NB Addington development has play area planned

Open space types

Based on now superseded PPG17 for open space. Useful guide to deciding on the classification type of each open space (based on many years research into the issue).

- i. parks and gardens
- ii. natural and semi-natural urban greenspaces
- iii. green corridors [NOTE: suggest avoided unless really cannot be fitted into one of the other categories as it can lack definition to a good planning or management approach as may share other regulatory frameworks such as highways or drainage etc]
- iv. outdoor sports facilities
- v. amenity greenspace (most commonly, but not exclusively in housing areas)
- vi. play and activity space for children and teenagers
- vii. allotments, community gardens, and city (urban) farms;
- viii. cemeteries
- ix. accessible countryside in urban fringe areas; and
- x. civic spaces

Habitat



UKBAP woodland, Ancient Woodland (hatched) and other priority habitats

Ordnance Survey © Crown copyright 2013 All rights reserved. David Orr Consulting Licence number LAN1000837

Flood



Ordnance Survey © Crown copyright 2013 All rights reserved. David Orr Consulting Licence number LAN1000837

Sports fields

Sport England, Assessing needs and opportunities guide for indoor and outdoor sports facilities. How to undertake and apply needs assessments for sports facilities, 2014

Mosaic data maps on sport participation at <http://segments.sportengland.org/index.aspx>

Nearest all weather Athletic track at Par Sports Ground.

Other Leisure facilities

Current provision

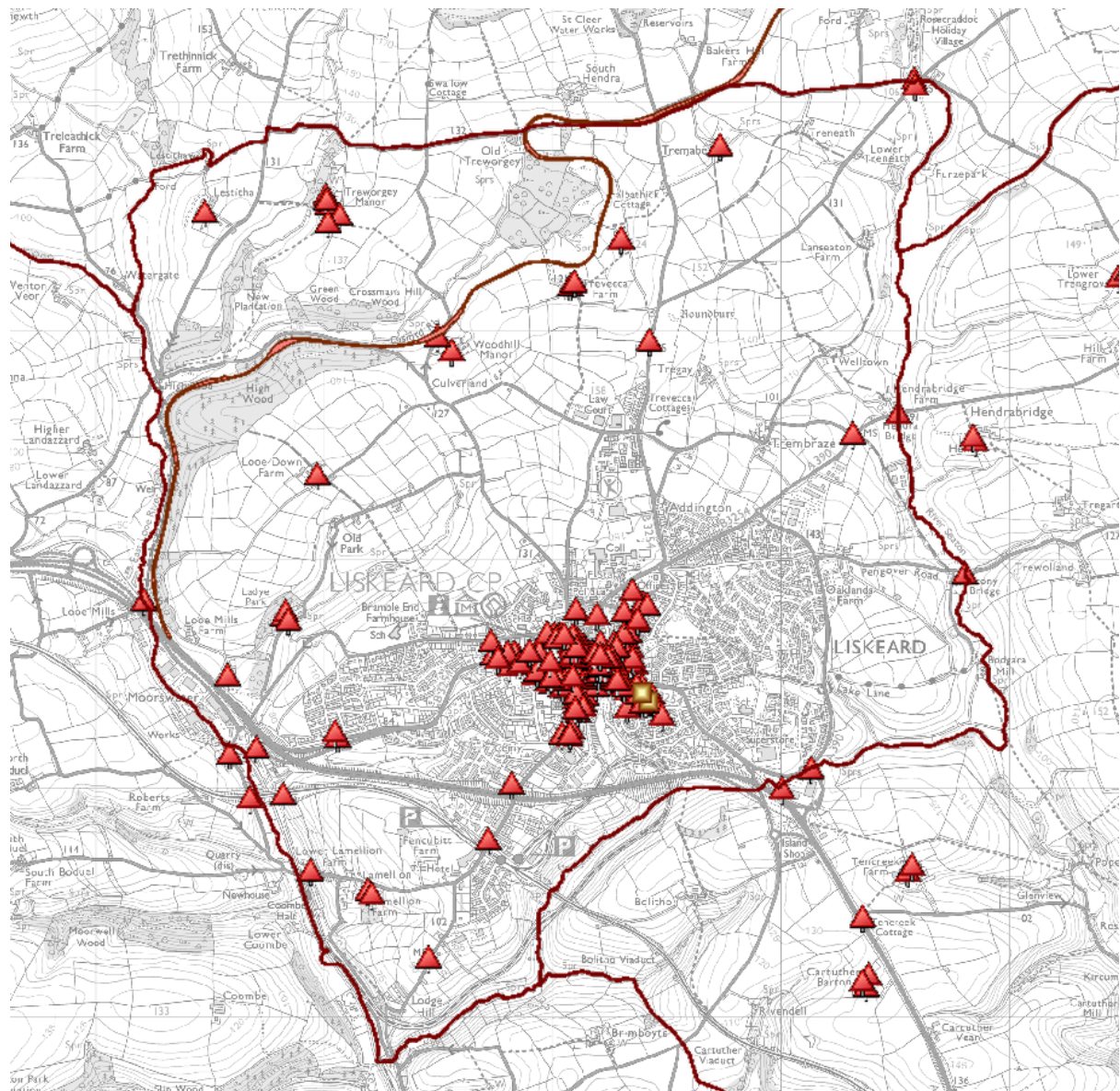
| Indoor | Outdoor |
|--|---|
| <u>Public</u> | |
| Sports centre – swimming, sports hall, squash, gym, bowls, Liskeard school – gym (off Old Hall) | Public Astro turf Football and rugby pitches Kickabout/MUGA - Rapsons Others?? |
| <u>Private</u> | |
| Private gyms 3 no. (St Martins hall, Old Town Hall) | Private Sports club – rugby Tennis club – 2 courts Football/ Cricket club |

Option provision

Cinema – requires specialist retail/ leisure market appraisal. Can reserve site but viability in question without developer interest. Could soft market test, but would cost.

Bowling – ditto.

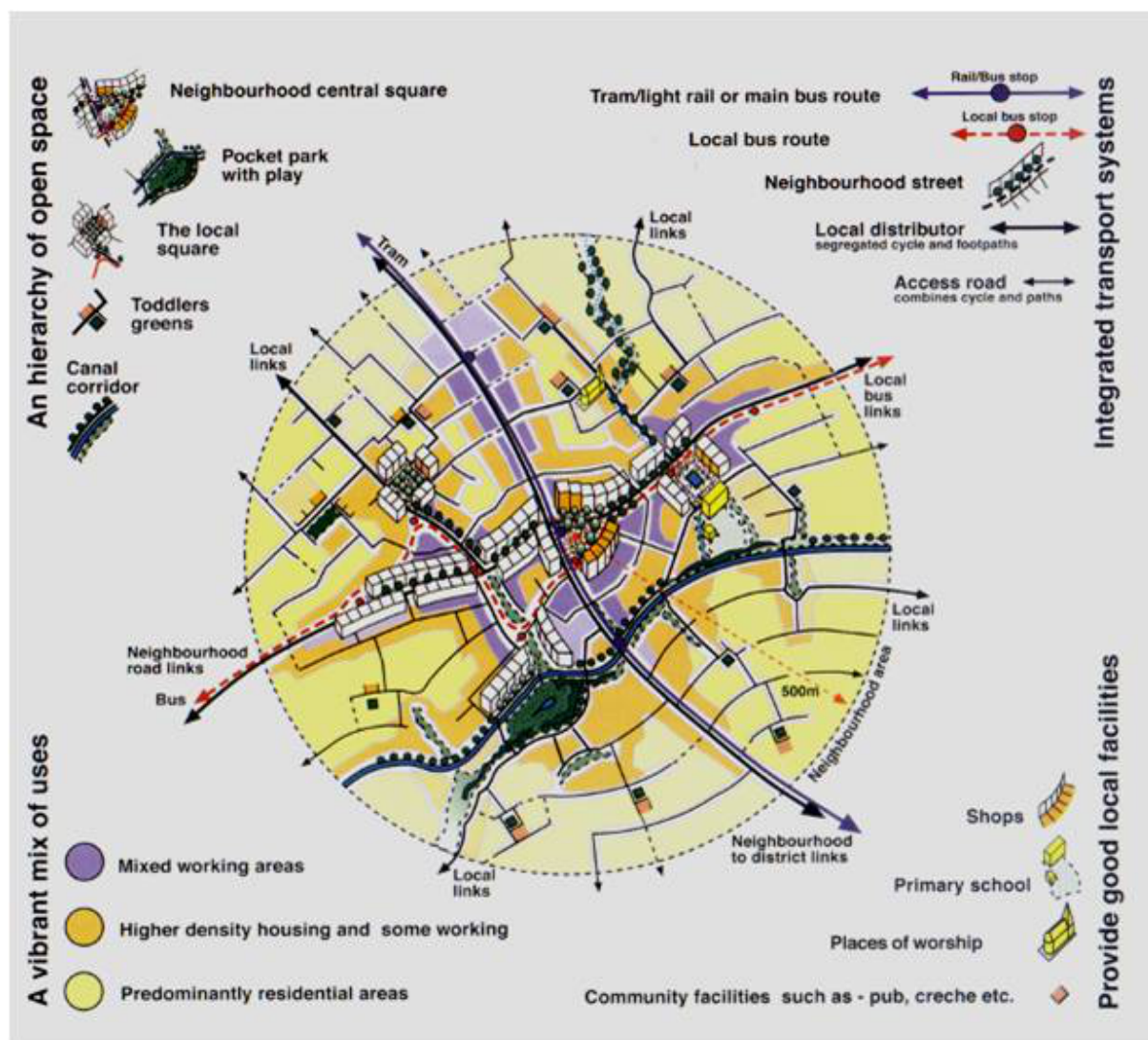
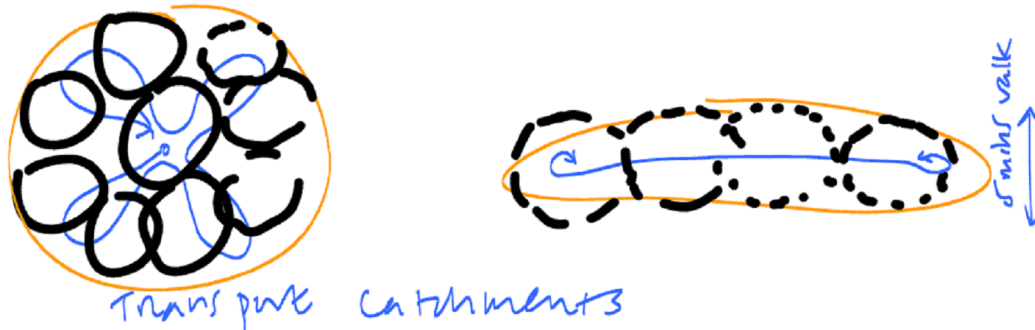
Heritage



WHS (Caradon Looe railway), Scheduled monuments - 2 crosses in St Martins churchyard & Listed buildings

Ordnance Survey © Crown copyright 2013 All rights reserved. David Orr Consulting Licence number LAN1000837

Place making strategy – creating neighbourhoods

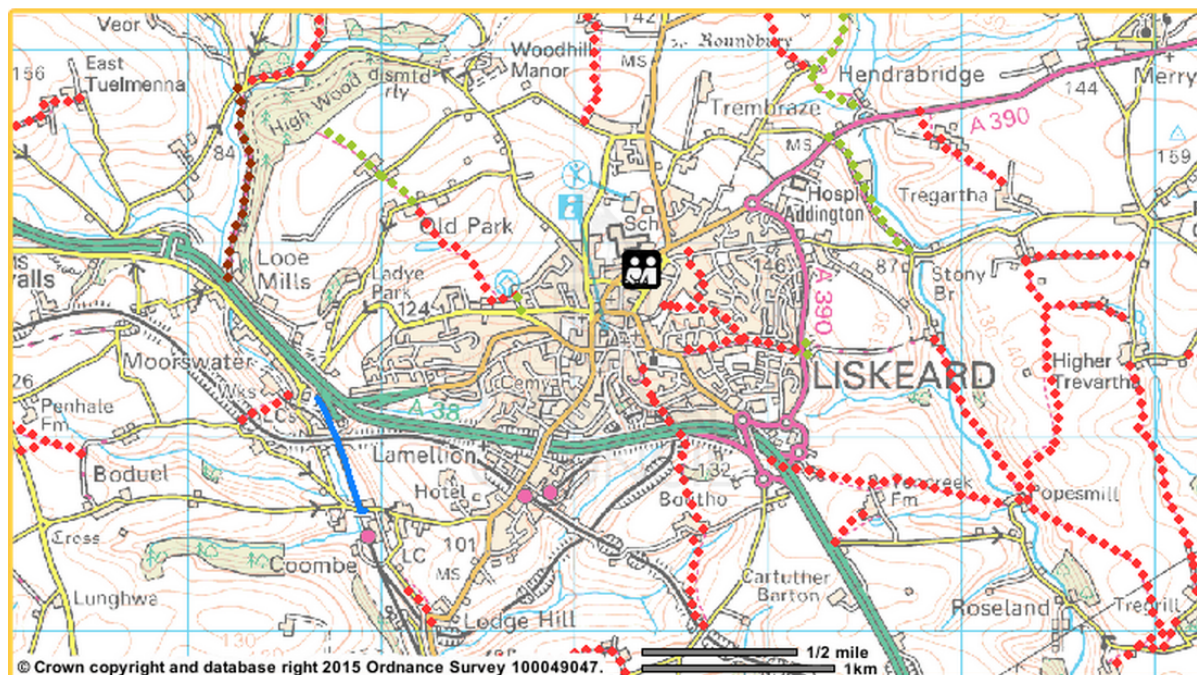


Accessibility

Accessibility standards

| Local facility | Illustrative catchment populations (to be adapted to local conditions and policies) | Minimum reasonable accessibility standards at different gross densities (assuming bendy routes) | | | |
|----------------------------|---|---|---------|---------|----------|
| | | 40 ppha | 60 ppha | 80 ppha | 100 ppha |
| Nursery/first school | 2,000 | 600 m | 500 m | 400 m | 400 m |
| Primary/middle school | 4,000 | 800 m | 700 m | 600 m | 500 m |
| Secondary school | 8,000 | 1,200 m | 1,000 m | 700 m | 700 m |
| Secondary school (large) | 16,000 | 1,500 m | 1,200 m | 1,000 m | 1,000 m |
| Health centre (4 doctors) | 10,000 | 1,200 m | 1,000 m | 900 m | 800 m |
| Local shop | 1,500 | 500 m | 400 m | 400 m | 300 m |
| Pub | 6,000 | 1,000 m | 800 m | 700 m | 600 m |
| Post office | 5,000 | 800 m | 700 m | 600 m | 600 m |
| Community centre | 4,000 | 800 m | 600 m | 600 m | 500 m |
| Local centre | 6,000 | 1,000 m | 800 m | 700 m | 600 m |
| District centre/superstore | 24,000 | 1,900 m | 1,500 m | 1,300 m | 1,200 m |
| Leisure centre | 24,000 | 1,900 m | 1,500 m | 1,300 m | 1,200 m |

Connections-Public rights of way



Inc definitive map modification orders

Questions

Green space

1. Are green spaces accessible and appropriate? Do they satisfy local need for meeting place, children's play, kick around, sport, allotments, and recreational walks?
2. Are green spaces designed with both beauty and a sense of safety in mind?
3. Does green space link to a wider network? Does it
 - a. Encourage circular walks and rides?
 - b. Provide a variety of habitats?
 - c. Manage water resources sustainably?
 - d. Manage microclimate well?
 - e. Help reduce pollution?
4. What are the green space management systems and ownerships and what is the potential role of the community in management and fundraising?

Leisure facilities

- a. What is need that is missing?
- b. How to plan for best provision?

Heritage

- a. Are we making most of the WHS, listed buildings/SAMs and locally listed or non designated heritage assets and fabric?

Urban design and place making

- a. Do we have strong neighbourhood centres/ clusters?
- b. How can we reinforce or create them?
- c. How can we link them?

Task

GREEN SPACE

- a. Create map of green spaces and types
- b. Identify gaps – include BAP areas and heritage, water management
- c. Identify links – utilise and join to heritage assets

LEISURE

- I. Map leisure facilities existing
- II. Identify gaps – discuss CC sports strategy team , cinema operators in Wadebridge, and bowling providers?

Timetable

| | Jan | Feb | Mar | Apr |
|----|-----|-----|-----|-----|
| a | | | | |
| b | | | | |
| c | | | | |
| I | | | | |
| II | | | | |